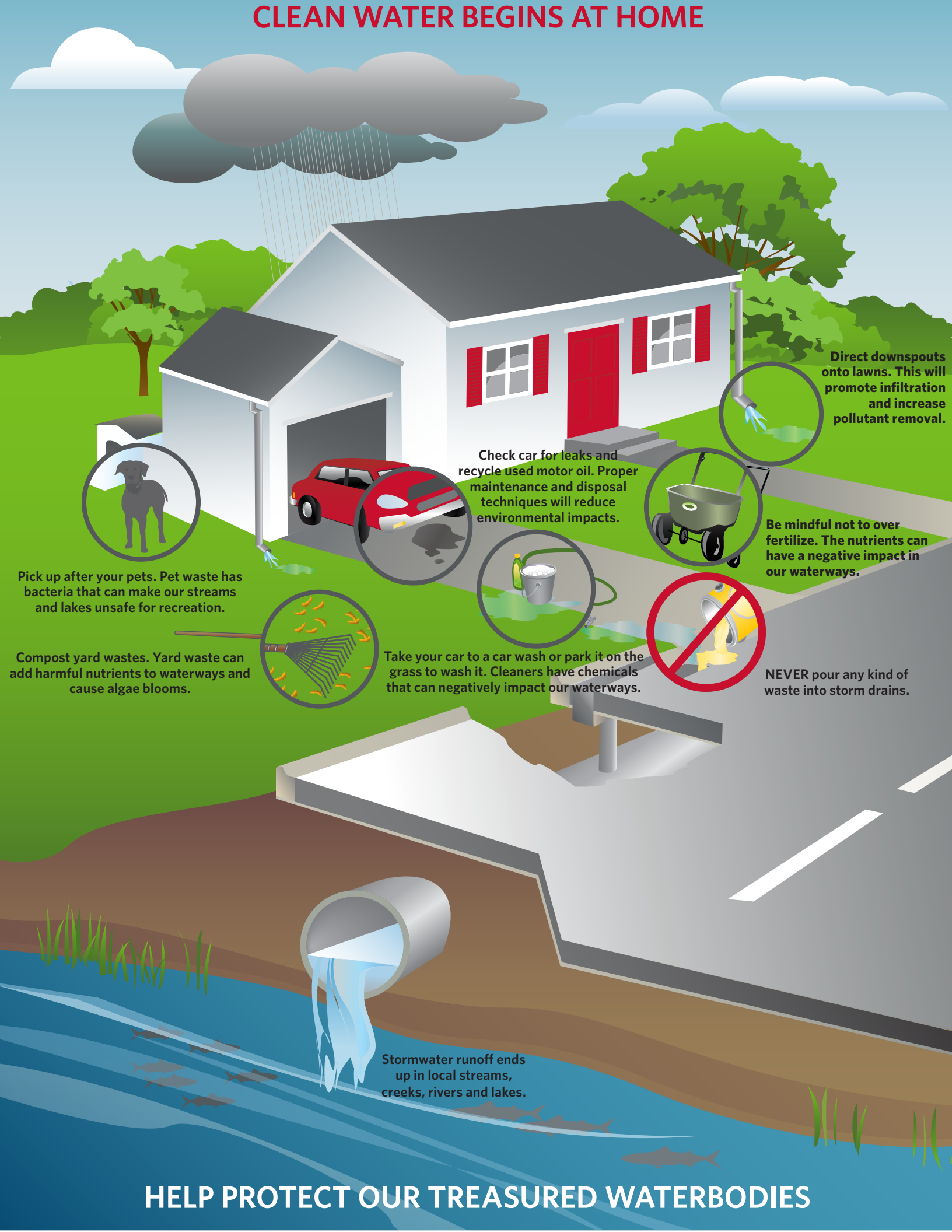


CLEAN WATER BEGINS AT HOME



Direct downspouts onto lawns. This will promote infiltration and increase pollutant removal.

Check car for leaks and recycle used motor oil. Proper maintenance and disposal techniques will reduce environmental impacts.

Be mindful not to over fertilize. The nutrients can have a negative impact in our waterways.

Pick up after your pets. Pet waste has bacteria that can make our streams and lakes unsafe for recreation.

Compost yard wastes. Yard waste can add harmful nutrients to waterways and cause algae blooms.

Take your car to a car wash or park it on the grass to wash it. Cleaners have chemicals that can negatively impact our waterways.

NEVER pour any kind of waste into storm drains.

Stormwater runoff ends up in local streams, creeks, rivers and lakes.

HELP PROTECT OUR TREASURED WATERBODIES

PARTNERS IN WATER QUALITY

To report or discuss stormwater issues, please contact:



City of Helena

Matt Culpo

Stormwater Engineer

(406) 447-8073

mculpo@helenamt.gov

www.helenamt.gov/public-works/utility-maintenance/stormwater



Lewis & Clark County Water Quality Protection District

Jennifer McBroom

Community Outreach & Watershed Coordinator

(406) 457-8584

jmcbroom@lccountymt.gov

<http://www.lccountymt.gov/health/water>