



# Sustainability and Recycling

## Go Green This November 15th: Celebrate National Recycling Day!

Mark your calendars! November 15th is approaching, which means it's time to honor National Recycling Day, a nationwide opportunity to focus our energy and attention on the crucial role the 3 R's (Reduce, Reuse, and Recycle) play in protecting our planet.

Established in 1997 by Keep America Beautiful, this day serves as an annual reminder that the responsibility for environmental stewardship belongs to all of us. It's a chance not just to celebrate the materials we successfully divert from landfills, but also to educate ourselves and our community on better habits.

### Beyond the Bin: Understanding the 3 R's Hierarchy

While tossing an empty aluminum can into the recycling bin is important, National Recycling Day encourages us to look at the bigger picture, the hierarchy of sustainability:

#### REDUCE: The Most Powerful 'R'

The most effective action we can take is preventing waste from being created in the first place. This means being a conscious consumer.

**ACTION:** First ask yourself "Do I really need this item?". If the answer is yes, choose products with minimal or no packaging, bring your own reusable bag and/or coffee cup, and plan meals to reduce food waste. Reduction saves energy and resources right at the source!



#### REUSE: Give Items a Second Chance

Before you recycle something, ask if it can be used again for its original purpose or creatively transformed.

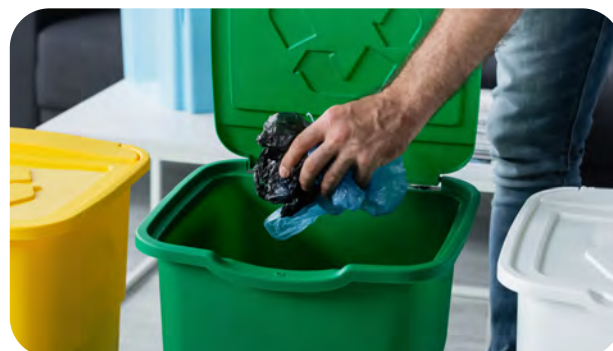
**ACTION:** Donate gently used clothing and furniture, use glass jars for storing pantry items, or turn old T-shirts into cleaning rags. Reusing saves the energy that would have been spent manufacturing a brand-new item. When you get creative, you'll be surprised at how much use can come from one item!



#### RECYCLE: The Final Step

Recycling is essential for closing the loop and turning old materials into new products.

**ACTION:** Know your local rules! Make sure items are clean and dry, and that you are only putting accepted materials in your bin (check the number on your plastics, remember that paperboard is not a recyclable).





### Celebrate National Recycling Day: Taking Action November 15

**Host a Waste Audit:** Look through your trash can before recycling day. What is the biggest category of waste you are tossing? Tackle that category next month by focusing on reducing it!

**Plan a Clothing Swap:** Cleaning out your closet has never been so fun! Get together with you friends and swap your gently used clothing, providing a reuse for your old clothes and new wardrobe options.

**Refresh your Recycling:** Having a specific place and system in your home for recycling makes the process easier. Keep your cheat sheet of what is recyclable in your area visible, your bins orderly, and your family educated!

Let's use November 15th as a springboard to make smarter choices all year long. Together, through conscious Reduction, creative Reuse, and dedicated Recycling, we can keep our community clean and preserve resources for future generations.

### Helena Recycling: Sept. 2024 vs. 2025



All numbers are in tons	September 2024	September 2025
Aluminum/Tin/Glass/Plastics	26.4	76.7
Paper	4.8	4.6
E-Waste	0	0
Scrap Metal	53.8	41
Cardboard	79.8	84.2
Auto Batteries	1.7	3.1
Lithium Batteries	0	0
Oil/Antifreeze	7.7	2.5
Grass/Leaves/Wood Chips/Bio-Solids/X-mas Trees/Food	587.2	885.1

### Charge Here, No Clubs Required: Public EV Station at Bill Roberts Golf Course

Need a recharge while you play a round of golf, grab a bite at Muni's, or cheer on the Saints at Carroll College? The Bill Roberts Golf Course electric vehicle charging station is here for you! This public charger is open to the public and available when you need it, located on the North side of the parking lot.







## **Bright Ideas, Bold Colors: Helena's Fall Sustainability Highlights**

### **A Record-Breaking Fall Paint Exchange**

The Fall Latex Paint Exchange was a huge hit, marking our largest event to date!

We're thrilled to share the impact: while 4.5 tons of paint still needed to be properly disposed of at the landfill, we estimate that over 30% of all the paint brought to the Transfer Station found a new life right here in our community!

By participating, you help keep usable materials out of the waste cycle and give your neighbors the chance to tackle their next project without buying new. It's a win for your wallet and the environment!



### **How to Prep for the Next Exchange**

Want to help us make the next exchange even better? Keep these points in mind:

**Usable Paint Only, Please!** The exchange is for good, usable paint. We cannot accept paint that is dried out, clumpy, frozen, or in a rusted can. Please solidify unusable paint before tossing it in the garbage.

**Lend a Hand Sorting!** We love volunteers who help us sort paint by color at the event. This simple step makes it much faster for community members to find that perfect shade.

**Patience is Key!** The exchange can get quite busy. Please be patient and allow everyone the time and space to look through the paint at their own pace.

### **Summer Outreach, Year-Round Impact**

This summer, our Public Outreach efforts reached an all-time high, connecting with more community members than ever before!

A big thank you to everyone who stopped by our booth at the Farmers Market. We had fantastic conversations about sustainability, recycling, and composting, providing information and answering your questions. These one-on-one connections are invaluable, and we absolutely loved connecting with our community. We're already looking forward to seeing you there again next year!



Our outreach didn't stop at the market! We also visited local day camps, turning environmental education into a fun adventure. We taught kids the best practices for recycling and showed them just how enjoyable helping the planet can be!

While summer is over, we aren't slowing down. Keep an eye out for us at local events, schools, and more this fall and winter!



## Harvest Food for the Holidays: Bring Your Garden to the Table



Now that you've harvested your crops and tucked your garden in for the winter, what will you do with your bounty? Don't let those jars of pickled beans gather dust in the pantry or your carrots shrivel in the cellar. Take pride in your Thanksgiving dinner by showcasing the fruits (and vegetables) of your labor—and discover how many dishes you can create from your own homegrown stores.

**Start with the classics.** Dilly beans are a must. Their crisp, tangy flavor makes them perfect for snacking or garnishing a holiday cocktail. When those family gatherings call for something to take the edge off, mix up a Bloody Mary topped with your freshly pickled veggies.

**Next, the side dishes.** Creamed corn and green bean casserole are holiday staples, and they're even better when they come from your own garden. If you managed to grow and preserve corn during Helena's short growing season, now's the time to pull it out of the freezer or pantry. The same goes for your string beans—serve them up in a casserole or sautéed as a simple, delicious side.

**Don't overlook the roots!** Carrots roasted with butter and a sprinkle of dill (bonus points if it's homegrown) make a colorful, flavorful addition to any holiday table.

**And then there's zucchini,** the crop that keeps on giving. Instead of letting it go to waste, grate and freeze it for later. Come December, whip up a loaf of zucchini bread—it's a cozy breakfast for holiday mornings or a sweet treat when warmed and served with butter.

**Finally, pumpkins.** Growing the right pie variety ensures your fall harvest ends with something truly special. A homemade pumpkin pie made from scratch is a satisfying, sustainable way to show off your green thumb to family and friends.

With a little planning in the spring, your holiday meals can be both delicious and sustainable. Growing and preserving your own produce reduces transportation emissions, saves money, and connects you to the true spirit of the season—gratitude, resourcefulness, and community.



## Helena Water Usage: August-September 2025

City of Helena water usage comparison in millions of gallons. Differences between treatment plant outputs are typically due to maintenance or the need to utilize additional water sources as natural water flow fluctuates throughout the year.		Ten Mile	Eureka	Missouri River	Monthly Total	Peak Day Demand	Average Day
	August	126.5	19.6	157.2	303.3	11.7	9.8
	September	136	17.5	81.4	234.9	9.6	7.8

### Transfer Station Hours

**CLOSED November 27 for Thanksgiving**

Open daily, 8 a.m. - 4:15 p.m.

Vehicles must be unloaded and out of the facility by 4:30 p.m.