

# South Hills Disc Golf Course



**PDGA** PROFESSIONAL DISC GOLF ASSOCIATION

## 1 PLAY SMART

Never throw into a blind area or when players, spectators, pedestrians, or other facility users are within range. Use a spotter.

## 2 RESPECT THE COURSE

Observe all posted rules. No littering, graffiti, or abuse of equipment or flora.

## 3 REPRESENT THE SPORT

Be positive and responsible. Teach others.

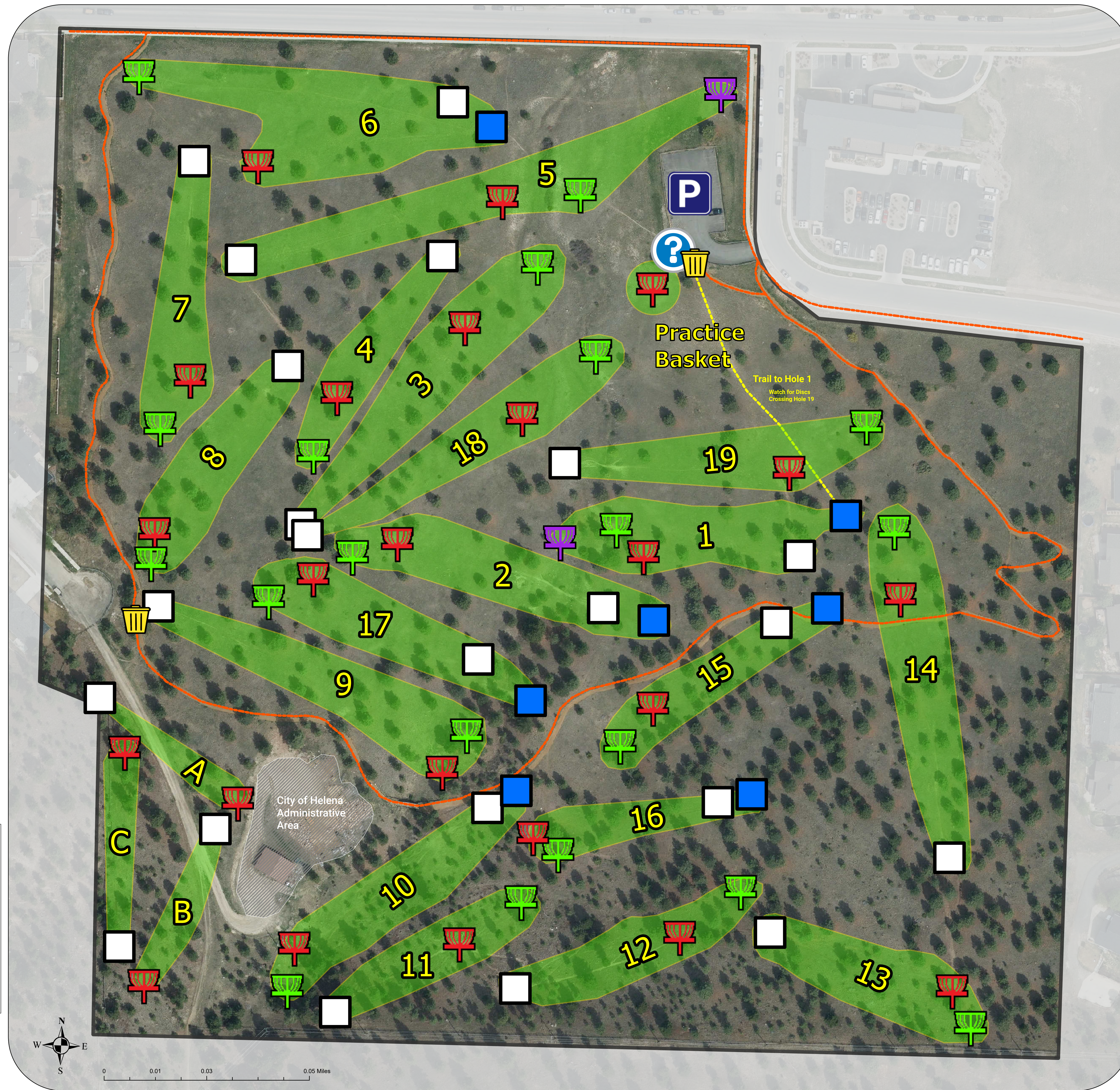


### Contacts:

**For Emergency Call 911**  
 City of Helena Open Lands Manager  
 (406) 447-8454  
 Animal Control  
 (406) 457-8865  
 Helena Police Department  
 (406) 447-8479



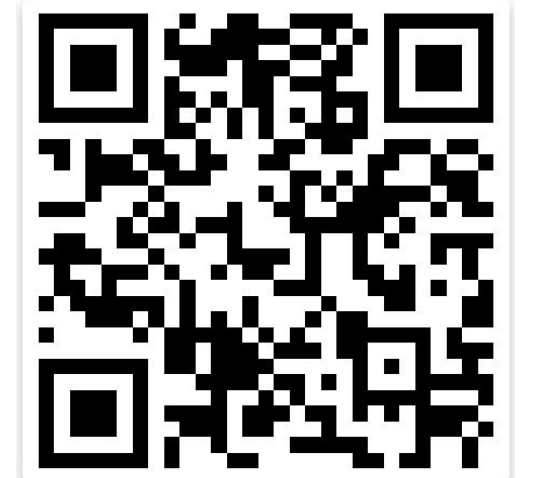
Scan this code to visit the Sleeping Giant Disc Golf Alliances Facebook page for more information about the group



### Legend

- Kiosk and Map
- Parking Lot
- Waste Receptacle
- Red Basket
- Green Basket
- Purple Basket
- White Tee
- Blue Tee
- Donaldson Loop Trail
- Course Boundary
- Fairways
- Administrative Area

Scan QR to download a Georeferenced PDF copy of this map - works with Avenza App



### South Hills Disc Golf Course Rules

- Pack it in, pack it out. Please do not litter. Trash receptacles are marked on this map in yellow.
- Stay on designated trails and beaten paths as much as possible; limit the spread of noxious weeds.
- No campfires are allowed on the City of Helena's Open Lands. Be cautious when smoking and adhere to DNRC Fire information and its restrictions.
- Be cautious of standing dead "Hazard Trees," especially on windy days, as they may fall and can cause serious injury.
- All trails on the map are designated as Non-Motorized Trails.
- Respect different user groups. Disc golfers, watch for pedestrians on the walking path. Pedestrians, be aware of flying discs.
- This area is subject to closure for maintenance and fire prevention activities.
- Camping is not allowed in the South Hills Disc Golf Course or on the City of Helena's Open Lands.
- For maintenance concerns (trails, weeds, forestry), please contact the City of Helena's Parks department.
- Pets must be within sight and under voice control or on a leash. Contact City of Helena Animal Control for animal-related issues.
- In case of an emergency, call 911.

### Hole Key

Red Basket Day																							
Hole Number	1	2	3	4	5	6	7	8	A	B	C	9	10	11	12	13	14	15	16	17	18	19	Total
White Tee	200	227	331	226	346	263	281	274	223	220	251	423	306	183	223	247	340	191	248	236	316	290	5845
Blue Tee	238	329	331	226	346	304	281	274	223	220	251	423	349	183	223	247	340	254	286	279	438	290	6335
Par	3	3	3	3	3	3	3	3	3	3	3	3	3	3	3	3	3	3	3	3	3	3	66
Green Basket Day																							
White Tee	238	329	452	305	446	404	345	307	223	220	251	430	347	279	317	339	427	257	215	321	316	392	7160
Blue Tee	264	344	452	305	446	457	345	307	223	220	251	430	390	279	317	339	427	318	260	360	438	290	7564
Par	3	3	3	3	3	3	3	3	3	3	3	3	3	3	3	3	3	3	3	3	3	3	66
Green/Purple Basket Day																							
White Tee	308	329	452	305	654	263	345	307	223	220	251	430	347	279	317	339	427	257	215	321	316	392	7297
Blue Tee	368	396	452	305	654	457	345	307	223	220	251	430	390	279	317	339	427	318	260	360	438	392	7928
Par	3	3	3	3	4	3	3	3	3	3	3	3	3	3	3	3	3	3	3	3	3	3	67

Note:  
 o Not every hole has a Blue Tee. The distances for those without were calculated from the white tee and background color is white in the hole diagram, distances from the blue tees have a blue background.  
 o Most Holes do not have a purple basket. Distances for these holes are calculated to the green baskets.



Disclaimer: This map and its information is provided for reference only. While the City of Helena strives for accuracy, it does not guarantee the accuracy of this product. Distances and locations are approximate, and some data may be incomplete. Use at your own risk. By using this map, you acknowledge that the City of Helena has no legal obligation regarding its use.