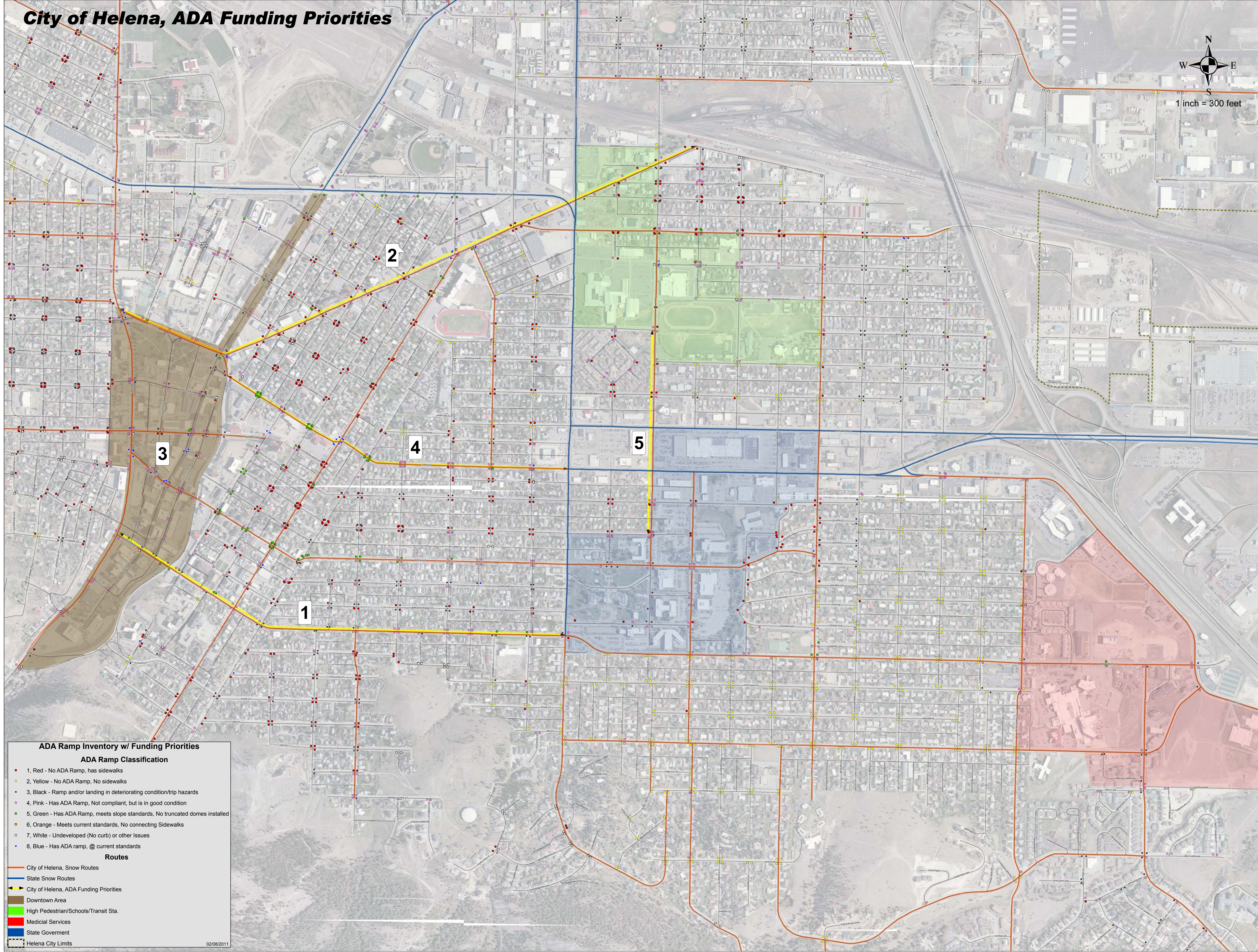


City of Helena, ADA Funding Priorities



ADA Ramp Inventory w/ Funding Priorities

ADA Ramp Classification

- 1. Red - No ADA Ramp, has sidewalks
- 2. Yellow - No ADA Ramp, No sidewalks
- 3. Black - Ramp and/or landing in deteriorating condition/trip hazards
- 4. Pink - Has ADA Ramp, Not compliant, but is in good condition
- 5. Green - Has ADA Ramp, meets slope standards, No truncated domes installed
- 6. Orange - Meets current standards, No connecting Sidewalks
- 7. White - Undeveloped (No curb) or other Issues
- 8. Blue - Has ADA ramp, @ current standards

Routes

- City of Helena, Snow Routes
- State Snow Routes
- City of Helena, ADA Funding Priorities
- Downtown Area
- High Pedestrian/Schools/Transit Sta.
- Medicial Services
- State Government
- Helena City Limits

02/08/2011