

RESOLUTIONS OF THE CITY OF HELENA, MONTANA

RESOLUTION NO. 20411

A RESOLUTION CREATING SPECIAL IMPROVEMENT LIGHTING DISTRICT NO. 225 IN THE CITY OF HELENA, MONTANA

WHEREAS, § 7-12-4301, et seq., MCA, allows the City of Helena to create special improvement lighting districts; and

WHEREAS, the City of Helena has before it a signed petition requesting the creation of a special improvement lighting district along both of sides of Elouise Cobell Street and Upland Avenue in the Uplands Phase 1 of the Crossroads at Mountain View Meadows Subdivision; and

WHEREAS, the City of Helena has determined that Lot 4 in Block 12 and Lot 4 in Block 22 in Uplands Phase 1 of Crossroads at Mountain View Meadows Subdivision will receive no benefit from any lighting infrastructure that may be installed as part of the proposed district, and thus will not be included within or be subject to assessment for the proposed district; and

WHEREAS, it appears to be in the best interests of the City of Helena, Montana, and the inhabitants thereof, specifically the inhabitants of the area to be known as Special Improvement Lighting District No. 225, that said Special Improvement Lighting District No. 225 be created; and

RESOLUTIONS OF THE CITY OF HELENA, MONTANA

Resol. No. 20411

WHEREAS, a public hearing was held on this matter on the **30th day of October, 2017, at 6:00 p.m.** in the Commission Chambers in the City-County Building at 316 North Park Avenue in Helena, Montana.

NOW, THEREFORE, BE IT RESOLVED BY THE COMMISSION OF THE CITY OF HELENA, MONTANA:

Section 1. Special Improvement Lighting District No. 225 in the City of Helena, for the purpose of installing and maintaining certain street lighting along both sides of Elouise Cobell Street and Upland Avenue in Uplands Phase 1 of the Crossroads at Mountain View Meadows Subdivision, more particularly described on Exhibit "A" attached hereto and by this reference made a part hereof, is hereby created.

Section 2. Special Improvement Lighting District No. 225 consists of the following blocks and lots specifically identified and referenced on Exhibits "A" and "B" attached hereto:

COS # 3305702

Block 9, Lots 1, 2 & 3

Block 14, Lots 1, 2, 3 & 4

Block 12, Lots 1, 2, 3, 5, 6, 7, & 8

Block 22, Lots 1, 2, 3, 5, 6, 7, 8, & 9

RESOLUTIONS OF THE CITY OF HELENA, MONTANA

Resol. No. 20411

COS # 3305702

An .807-acre portion of Tract 1-A-2 as shown on Exhibit "A"

Section 3. The general character of the improvements to be installed, operated, and maintained in said district is twelve (12) lighting units with underground wiring, fiberglass or metal poles for 16-foot mounting heights, and glass-enclosed, Lexington Colonial luminaries with 100-watt, high-pressure, sodium vapor lamps.

Section 4. The estimated cost of installing and maintaining said improvements, supplying electrical energy, and administration for the first year is **\$8,583**, with the estimated cost being **\$0.0335** per square foot of property owned along both sides of Elouise Cobell Street, said amount to be paid by the property owners, as more specifically described on the attached Exhibit "B." That amount includes the additional assessment to be charged by the City to establish a cash reserve and recover any costs of the district incurred prior to receipt of the first assessments. Thereafter, the annual assessment will be approximately fifty percent (50%) of the first year's assessment.

RESOLUTIONS OF THE CITY OF HELENA, MONTANA

Resol. No. 20411

Section 5. All the costs of maintaining said lighting shall be borne by the owners of the property within said district with the exception of the specific property identified on Exhibit "B".

PASSED AND EFFECTIVE BY THE COMMISSION OF THE CITY OF HELENA, MONTANA, THIS 30th DAY OF OCTOBER, 2017.

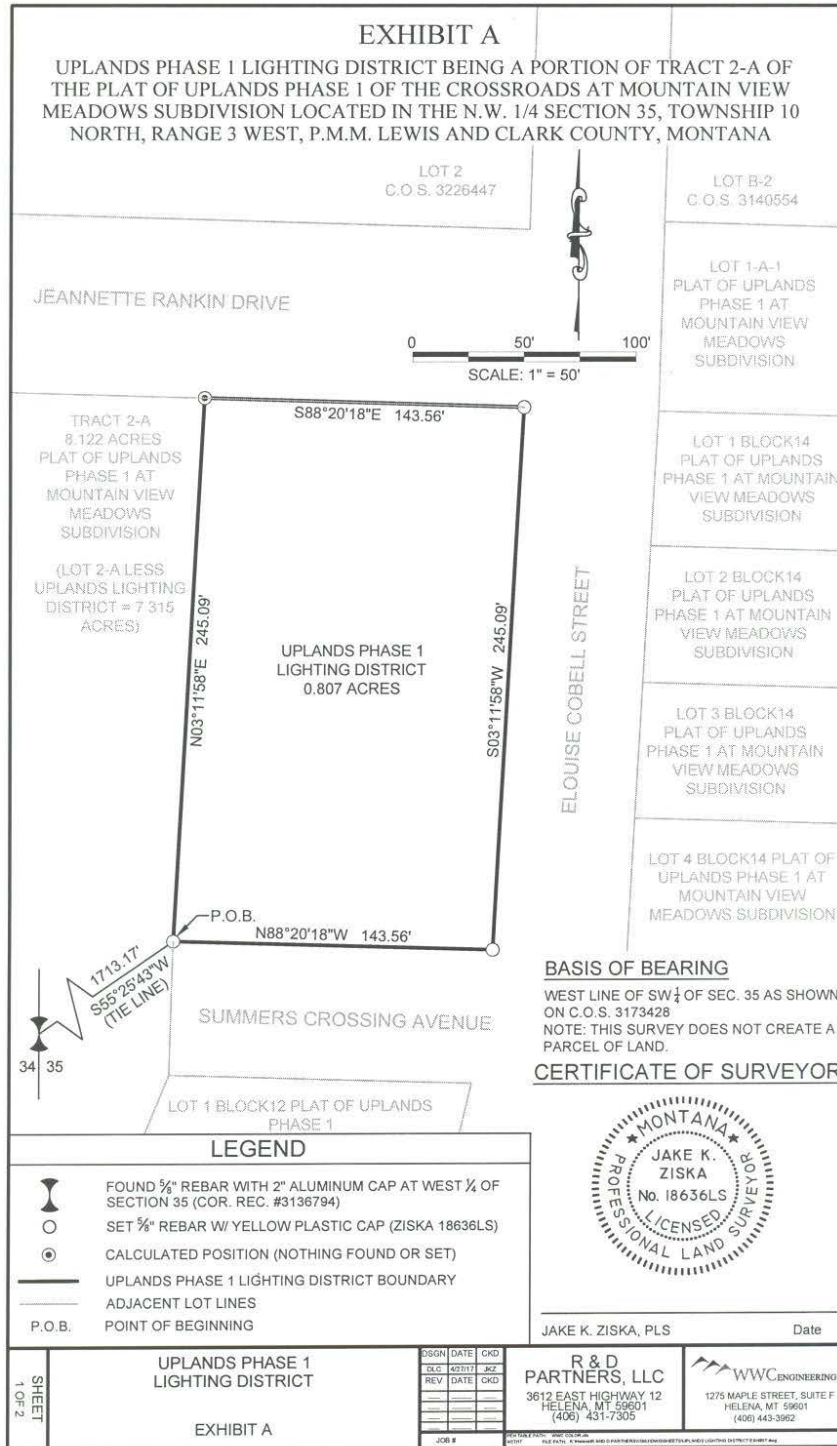
/S/ JAMES E. SMITH
MAYOR

ATTEST:

/S/ DEBBIE HAVENS
CLERK OF THE COMMISSION

RESOLUTIONS OF THE CITY OF HELENA, MONTANA

Resol. No. 20411



RESOLUTIONS OF THE CITY OF HELENA, MONTANA

Resol. No. 20411

Exhibit B
Property Listing - Lighting District 225
 Uplands Phase I of Crossroads at Mountain
 View Meadows Subdivision
 COS # 3305702

Estimated Cost

of Lights 12
 Monthly cost per light \$ 29.80
 Estimated Annual Cost \$ 4,291.20

Block	Lot	Square Feet	Estimated Annual Cost
-------	-----	-------------	-----------------------

COS # 3305702

Block 9	Lot 1	16,187	\$ 270.90
Block 9	Lot 2	12,000	\$ 200.83
Block 9	Lot 3	12,000	\$ 200.83
Block 14	Lot 1	7,401	\$ 123.86
Block 14	Lot 2	7,501	\$ 125.53
Block 14	Lot 3	7,602	\$ 127.22
Block 14	Lot 4	7,703	\$ 128.91
Block 12	Lot 1	10,311	\$ 172.56
Block 12	Lot 2	7,874	\$ 131.78
Block 12	Lot 3	7,645	\$ 127.94
Block 12	Lot 5	10,641	\$ 178.08
Block 12	Lot 6	10,255	\$ 171.62
Block 12	Lot 7	11,075	\$ 185.35
Block 12	Lot 8	10,473	\$ 175.27
Block 22	Lot 1	13,561	\$ 226.95
Block 22	Lot 2	9,816	\$ 164.28
Block 22	Lot 3	9,669	\$ 161.82
Block 22	Lot 5	7,325	\$ 122.59
Block 22	Lot 6	8,928	\$ 149.41
Block 22	Lot 7	8,598	\$ 143.89
Block 22	Lot 8	9,278	\$ 155.27
Block 22	Lot 9	15,417	\$ 258.01

COS # 3305702

Tract 1-A-2 (Portion) 35,152.92 \$ 588.30

Total Square Feet	256,412.92	\$ 4,291.20
First Year Double		\$ 8,582.40

Cost per Square Foot \$ 0.0335

Not Assessed as No Benefit Received

Block 12	Lot 4	Open Space
Block 22	Lot 4	Open Space