

RESOLUTIONS OF THE CITY OF HELENA, MONTANA

RESOLUTION NO. 20439

A RESOLUTION ANNEXING THE CRAFTSMAN VILLAGE PHASE 4 OF THE CROSSROADS AT MOUNTAIN VIEW MEADOWS SUBDIVISION IN LEWIS AND CLARK COUNTY INTO THE CITY OF HELENA, MONTANA

WHEREAS, R and D Partners, LLC, (now known as Mountain View Meadows, LLC), the legal owner of an approximately 3.439-acre portion of Tract A-1-A-1-A-1-A-1 and the internal dedicated public rights-of-way of Jeannette Rankin Drive, Bella View Street, and Swift Current Street, as shown on the final plat of Craftsman Village Phase 4 of the Crossroads at Mountain View Meadows Subdivision, recorded under Document No. 3321782, which property is currently located adjacent to the existing city limits and generally located east of S. Alice Street and north of Alexis Avenue, in Lewis and Clark County Montana, has requested that the City of Helena annex said property;

WHEREAS, the City of Helena desires to annex said property and the internal rights-of-way under the provisions of Montana law;

WHEREAS, the City Commission established conditions for annexation by Resolution No. 19911 on May 7, 2012, and as amended by Resolution No. 20341 on May 22, 2017; and

WHEREAS, the conditions of annexation associated with the Craftsman Village Phase 4 of the Crossroads at Mountain View Meadows Subdivision have been met.

RESOLUTIONS OF THE CITY OF HELENA, MONTANA

Resol. 20439

NOW, THEREFORE, BE IT RESOLVED BY THE COMMISSION OF THE CITY OF HELENA, MONTANA, AS FOLLOWS:

Section 1. The Helena City Commission hereby annexes an approximately 3.439-acre portion of Tract A-1-A-1-A-1-A-1 and the internal dedicated public rights-of-way of Jeannette Rankin Drive, Bella View Street, and Swift Current Street, as shown on the final plat of Craftsman Village Phase 4 of the Crossroads at Mountain View Meadows Subdivision, recorded under Document No. 3321782, which property is currently located adjacent to the existing city limits and generally located east of S. Alice Street and north of Alexis Avenue, in Lewis and Clark County Montana, has requested that the City of Helena annex said property; as shown on Exhibit "A" attached hereto.

Section 2. The boundaries of the City of Helena are hereby extended to include the above-described property.

Section 3. The Clerk of the Commission shall certify, under seal of the City of Helena, the Resolution which shall be filed with the Clerk and Recorder of Lewis and Clark County, and thereafter said annexed property shall be a part of the City of Helena and the City of Helena shall have the power to pass all necessary ordinances pertaining thereto.

RESOLUTIONS OF THE CITY OF HELENA, MONTANA

Resol. 20439

PASSED AND EFFECTIVE BY THE COMMISSION OF THE CITY OF HELENA,
MONTANA, THIS 7TH DAY OF MAY, 2018.

/S/ WILMOT COLLINS_
MAYOR








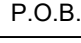
ATTEST:

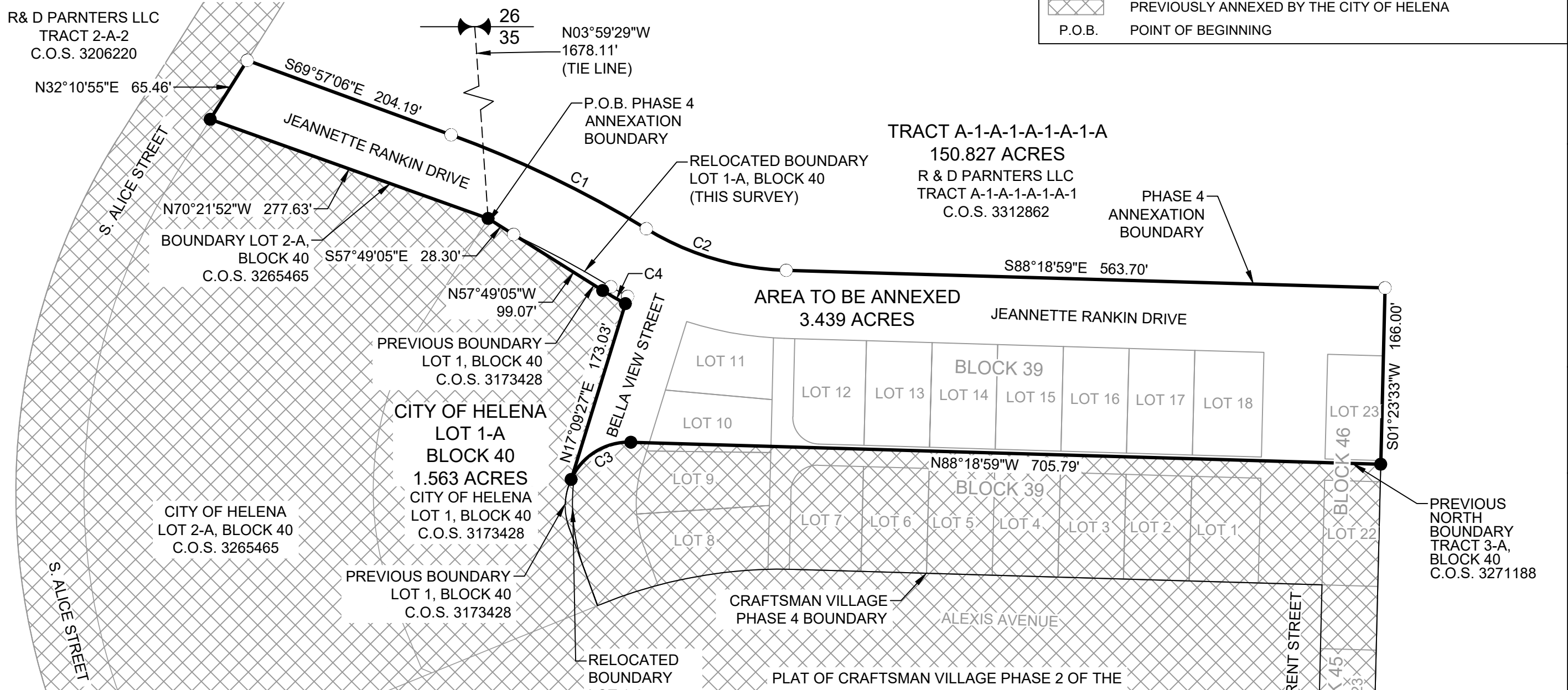
/S/ DEBBIE HAVENS
CLERK OF THE COMMISSION

CRAFTSMAN VILLAGE PHASE 4 ANNEXATION EXHIBIT

BEING A PORTION OF TRACT A-1-A-1-A-1-A-1 OF THE PLAT OF
 CRAFTSMAN VILLAGE PHASE 3, C.O.S. 3312862
 LOCATED IN THE N. 1/2 OF SECTION 35, TOWNSHIP 10 NORTH,
 RANGE 3 WEST, P.M.M., LEWIS AND CLARK COUNTY, MONTANA

LEGEND

-  FOUND 2" ALUM. CAP (4125S) ON 5/8" REBAR AT 1/4 SECTION CORNER
-  SET 5/8" REBAR W/ YELLOW PLASTIC CAP (ZISKA 18636LS)
-  FOUND 5/8" REBAR W/ YELLOW PLASTIC CAP (ZISKA 18636LS) OR AS NOTED
-  EXISTING CITY OF HELENA BOUNDARY
-  ANNEXATION BOUNDARY
-  CRAFTSMAN VILLAGE PHASE 4 LOT BOUNDARIES
-  PREVIOUSLY ANNEXED BY THE CITY OF HELENA
-  P.O.B. POINT OF BEGINNING



Curve Table

Curve #	Length	Radius	Delta	Chord Direction	Chord Length
C1	204.12'	1032.00'	11°19'57"	S64°17'07"E	203.79'
C2	138.91'	268.00'	29°41'51"	S73°28'04"E	137.36'
C3	70.22'	60.00'	67°03'03"	S58°09'29"W	66.28'
C4	24.69'	339.00'	4°10'24"	N59°54'17"W	24.69'

COPYRIGHT 2017
 WWC ENGINEERING, HEREBY RESERVES
 OUR COMMON LAW COPYRIGHT IN THIS
 SURVEY. THIS SURVEY IS A LEGAL
 INSTRUMENT OF PROFESSIONAL SERVICE
 INCORPORATED HEREIN AND AS SUCH
 PART FOR ANY PROJECTS OR OTHER USE
 WITHOUT OUR EXPRESS WRITTEN
 AUTHORIZATION.

WWC ENGINEERING
 1275 MAPLE STREET, SUITE F
 HELENA, MT 59601
 (406) 443-3962

R & D PARTNERS
 431 SOUTH ALICE
 HELENA, MT 59601
 (406) 431-7305

DSGN	DATE	CKD
TAS	10/17	JKZ
REV	DATE	CKD

JOB # 2016-096
 FILE PATH: C:\Users\and.d\Partners\0906\DWG\SHEETS\ANNEXATION EXHIBIT\CV PH 4 ANNEXATION EXHIBIT.dwg

**CRAFTSMAN VILLAGE PHASE IV
 AT MOUNTAIN VIEW MEADOWS**

ANNEXATION EXHIBIT

SHEET NO.
1
 OF 2