

RESOLUTIONS OF THE CITY OF HELENA, MONTANA

RESOLUTION NO. 20430

**A RESOLUTION AMENDING RESOLUTION NO. 19818
THAT CREATED SPECIAL IMPROVEMENT LIGHTING DISTRICT NO. 222
TO ALTER THE BOUNDARIES OF AND ADD EIGHT LIGHTS IN
SILD NO. 222 IN THE CITY OF HELENA, MONTANA**

WHEREAS, § 7-12-4301, et seq., MCA, allows the City of Helena to create special improvement lighting districts and alter the boundaries thereof; and

WHEREAS, on March 14, 2011, the City Commission considered and passed Resolution No. 19818 that created Special Improvement Lighting District No. 222 in the City of Helena; and

WHEREAS, on July 25, 2011, the City Commission considered and passed Resolution No. 19856 that amended the boundaries of Special Improvement Lighting District No. 222 to include five (5) additional street lights; and

WHEREAS, on June 23, 2014, the City Commission considered and passed Resolution No. 20085 that amended the boundaries of Special Improvement Lighting District No. 222 to include five (5) additional street lights; and

WHEREAS, on July 27, 2015, the City Commission considered and passed Resolution No. 20190 that amended the boundaries of Special Improvement Lighting District No. 222 to include seventeen (17) additional street lights; and

WHEREAS, the City of Helena now has before it a petition

RESOLUTIONS OF THE CITY OF HELENA, MONTANA

Resol. 20430

signed and filed by R and D Partners, LLC, requesting the further alteration of the boundaries of Special Improvement Lighting District No. 222 to include property along Stacia Avenue within Craftsman Village Phase 3 in the Crossroads at Mountain View Meadows subdivision, as shown on Exhibit "A" attached hereto; and

WHEREAS, the additional property requires the installation of eight (8) additional lights on both sides of Stacia Avenue east of Swift Current Street; and

WHEREAS, it appears to be in the best interests of the City of Helena, and the inhabitants thereof, specifically the inhabitants of Special Improvement Lighting District No. 222, that Resolution No. 19818 be amended again to include all that property described on Exhibit "A" attached hereto; and

WHEREAS, notice of the passage of the resolution of intention was mailed to each person, firm, or corporation having property within the special improvement lighting district; and

WHEREAS, a public hearing was held on this matter on the 26th day of February, 2018, in the Commission Chambers at 316 North Park Avenue in Helena Montana and no protests were raised.

BE IT RESOLVED BY THE COMMISSION OF THE CITY OF HELENA, MONTANA:

RESOLUTIONS OF THE CITY OF HELENA, MONTANA

Resol. 20430

Section 1. The Commission of the City of Helena, Montana hereby amends Resolution No. 19818 that created Special Improvement Lighting District No. 222 in the City of Helena, for the purpose of including twenty six (26) additional lots in Blocks 44 and 45 of Craftsman Village Phase 3 of the Crossroads at Mountain View Meadows Subdivision, and with eight (8) additional street lights in said lighting district, more particularly described on Exhibit "A" attached hereto and by this reference made a part hereof.

Section 2. The boundaries of said Special Improvement Lighting District No. 222 shall be altered to include the property as described on Exhibit "A."

Section 3. The general character of the improvements to be made in the additional area is the installation and maintenance of eight (8) lighting units with underground wiring, fiberglass or metal poles with 16-foot mounting heights, and Lexington Colonial luminaries with 100-watt, high-pressure, sodium vapor lamps.

Section 4. The total estimated cost of maintaining said improvements, supplying electrical energy, and administration thereof for eight (8) additional lights is \$4,291.00 and the estimated cost for the enlarged district for the first year is \$43,561.00, with the estimated cost being \$0.01859 per square foot

RESOLUTIONS OF THE CITY OF HELENA, MONTANA

Resol. 20430

of property owned, said amount to be paid by the property owners.

Section 5. All of the cost of installing and maintaining said lighting shall be borne by the owners of the property embraced within the boundaries of said district.

**PASSED AND EFFECTIVE BY THE COMMISSION OF THE CITY OF HELENA,
MONTANA, THIS 26th DAY OF FEBRUARY, 2018.**

**/S/ WILMOT COLLINS
MAYOR**

ATTEST:

**/S/ DEBBIE HAVENS
CLERK OF THE COMMISSION**

Exhibit A

Special Improvement Lighting District (SILD) No. 222 - Amendment

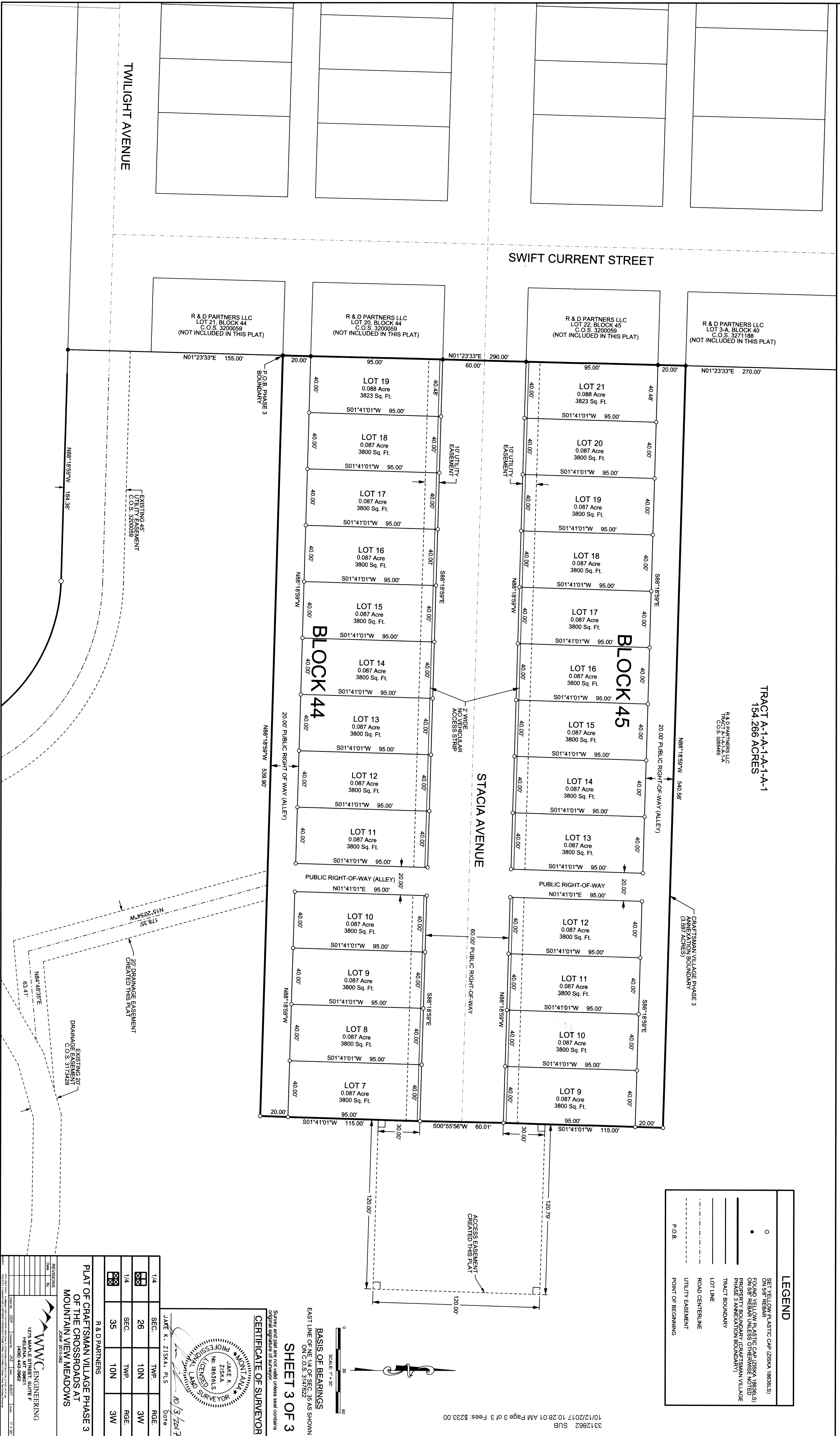
This SILD amendment encompasses the original blocks and lots listed below as shown on the official plat on file in the office of the Lewis and Clark County Clerk and Recorder for Craftsman Village Phase III of Crossroads at Mountain View Meadows Subdivision, as approved by the City Commission September 25, 2017.

Tract A-1-A-1-A-1-A-1

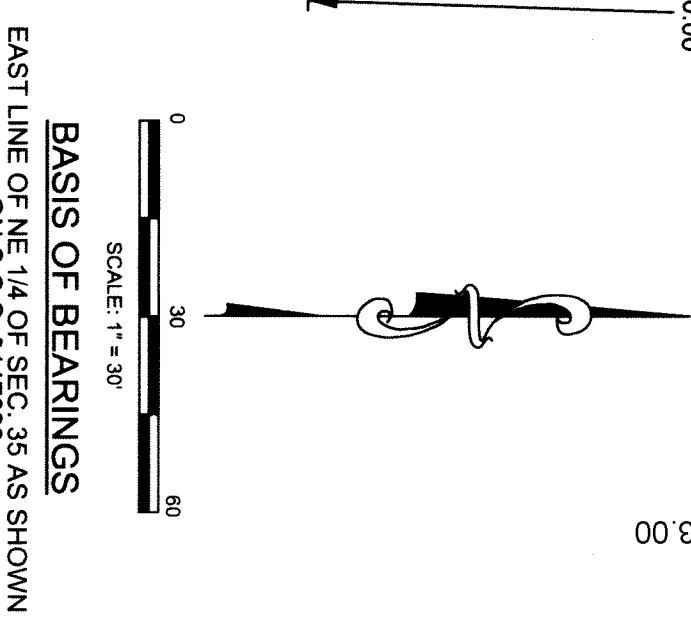
Block 44	Lot 7
Block 44	Lot 8
Block 44	Lot 9
Block 44	Lot 10
Block 44	Lot 11
Block 44	Lot 12
Block 44	Lot 13
Block 44	Lot 14
Block 44	Lot 15
Block 44	Lot 16
Block 44	Lot 17
Block 44	Lot 18
Block 44	Lot 19
Block 45	Lot 9
Block 45	Lot 10
Block 45	Lot 11
Block 45	Lot 12
Block 45	Lot 13
Block 45	Lot 14
Block 45	Lot 15
Block 45	Lot 16
Block 45	Lot 17
Block 45	Lot 18
Block 45	Lot 19
Block 45	Lot 20
Block 45	Lot 21

Exhibit A cont - Final Plat

PLAT OF CRAFTSMAN VILLAGE PHASE 3 OF THE
CROSSROADS AT MOUNTAIN VIEW MEADOWS SUBDIVISION
A PORTION OF TRACT A-1-A-1-A-1-A OF CERTIFICATE OF SURVEY NO. 3265465
LOCATED IN THE E. 1/2 AND THE N.W. 1/4 OF SECTION 35 AND THE S. 1/2 OF SECTION 26,
TOWNSHIP 10 NORTH, RANGE 3 WEST, P.M.M.
LEWIS AND CLARK COUNTY, MONTANA



LEGEND	
○	SET-YELLOW PLASTIC CAP (ZISKA 189981(S))
●	ON-SITE REBAR
○	FOUND YELLOW PLASTIC CAP (ZISKA 189981(S))
○	ON-SITE REBAR UNLESS OTHERWISE NOTED
—	PROPERTY BOUNDARY (CRAFTSMAN VILLAGE PHASE 3 ANNEXATION BOUNDARY)
—	TRACT BOUNDARY
—	LOT LINE
—	ROAD CENTERLINE
—	UTILITY EASEMENT
—	POINT OF BEGINNING
—	P.O.B.



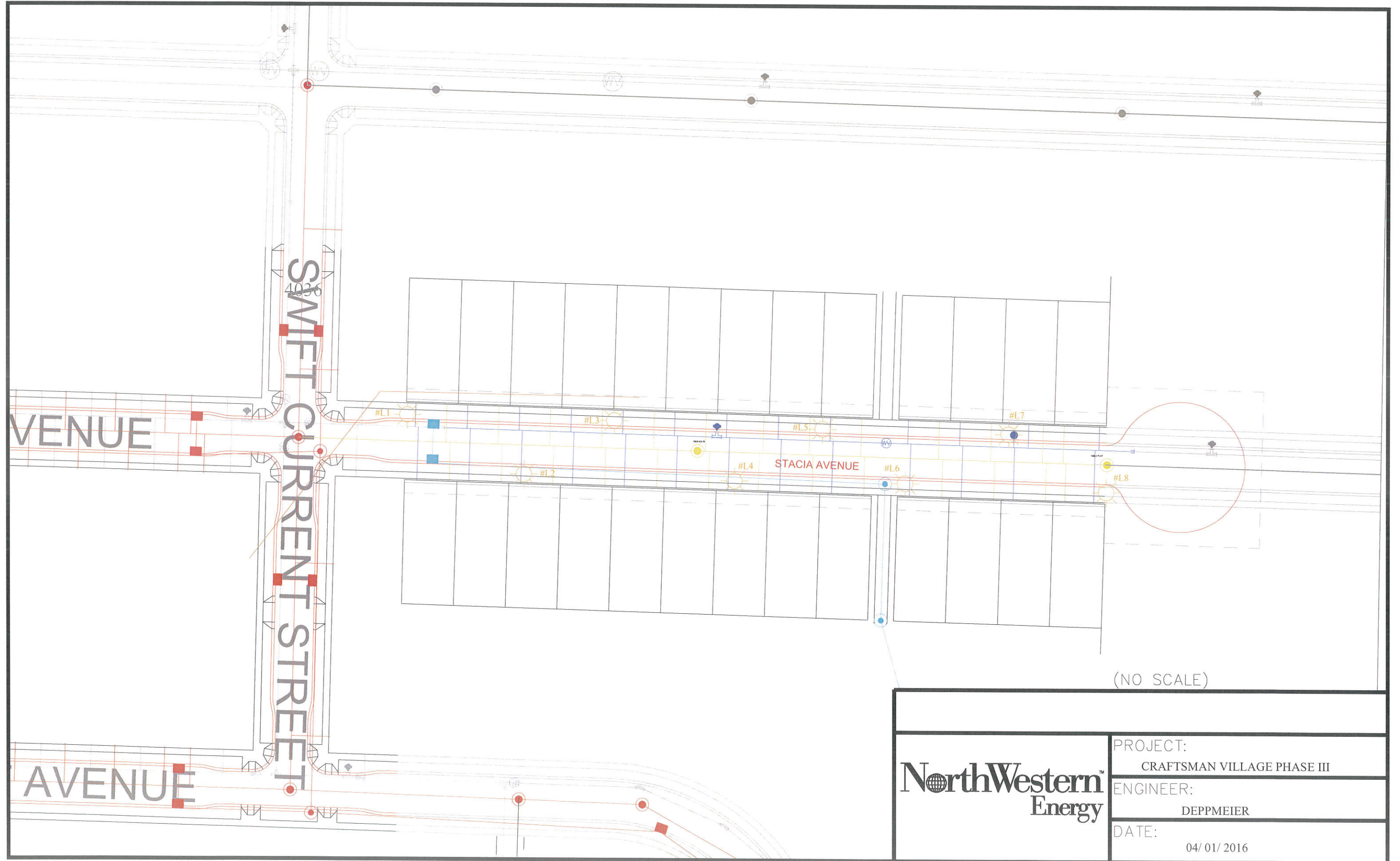
CERTIFICATE OF SURVEYOR
Survey and plat are not valid unless seal contains original signature of surveyor.
JAKE K. ZISKA, P.L.S.
Date: 10/3/2017

NO.	DATE	BY	REVISIONS
1/4	26	JAK	10N 3W
1/4	35	JAK	10N 3W

WMC ENGINEERING
1275 MAPLE STREET, SUITE F
HELENA, MONTANA 59601
(406) 443-8882

PLAT OF CRAFTSMAN VILLAGE PHASE 3 OF THE CROSSROADS AT MOUNTAIN VIEW MEADOWS
JOB# 2015-082

Exhibit A cont - Lighting Map



(NO SCALE)



PROJECT:	CRAFTSMAN VILLAGE PHASE III
ENGINEER:	DEPPMEIER
DATE:	04/01/2016