

RESOLUTIONS OF THE CITY OF HELENA, MONTANA

RESOLUTION NO. 20427

**A RESOLUTION OF INTENTION TO AMEND RESOLUTION NO. 19818
THAT CREATED SPECIAL IMPROVEMENT LIGHTING DISTRICT NO. 222
TO ALTER THE BOUNDARIES OF AND ADD EIGHT LIGHTS IN
SILD NO. 222 IN THE CITY OF HELENA, MONTANA**

WHEREAS, § 7-12-4301, et seq., MCA, allows the City of Helena to create special improvement lighting districts and alter the boundaries thereof; and

WHEREAS, on March 14, 2011, the City Commission considered and passed Resolution No. 19818 that created Special Improvement Lighting District No. 222 in the City of Helena; and

WHEREAS, on July 25, 2011, the City Commission considered and passed Resolution No. 19856 that amended the boundaries of Special Improvement Lighting District No. 222 to include five (5) additional street lights; and

WHEREAS, on June 23, 2014, the City Commission considered and passed Resolution No. 20085 that amended the boundaries of Special Improvement Lighting District No. 222 to include five (5) additional street lights; and

WHEREAS, on July 27, 2015, the City Commission considered and passed Resolution No. 20190 that amended the boundaries of Special Improvement Lighting District No. 222 to include seventeen (17) additional street lights; and

WHEREAS, the City of Helena now has before it a petition

RESOLUTIONS OF THE CITY OF HELENA, MONTANA

Resol. 20427

signed and filed by R and D Partners, LLC, requesting the further alteration of the boundaries of Special Improvement Lighting District No. 222 to include property along Stacia Avenue within Craftsman Village Phase 3 in the Crossroads at Mountain View Meadows subdivision, as shown on Exhibit "A" attached hereto; and

WHEREAS, the additional property requires the installation of eight (8) additional lights on both sides of Stacia Avenue east of Swift Current Street; and

WHEREAS, it appears to be in the best interests of the City of Helena, and the inhabitants thereof, specifically the inhabitants of Special Improvement Lighting District No. 222, that Resolution No. 19818 be amended again to include all that property described on Exhibit "A" attached hereto.

NOW, THEREFORE, BE IT RESOLVED BY THE COMMISSION OF THE CITY OF HELENA, MONTANA:

Section 1. That it is the intention of the Commission of the City of Helena, Montana to amend Resolution No. 19818 that created Special Improvement Lighting District No. 222 in the City of Helena, for the purpose of including twenty six (26) additional lots in Blocks 44 and 45 of Craftsman Village Phase 3 of the Crossroads at Mountain View Meadows Subdivision, and with eight (8)

RESOLUTIONS OF THE CITY OF HELENA, MONTANA

Resol. 20427

additional street lights in said lighting district, more particularly described on Exhibit "A" attached hereto and by this reference made a part hereof.

Section 2. The general character of the improvements to be made in the additional area is the installation and maintenance of an additional eight (8) lighting units with underground wiring, fiberglass or metal poles with 16-foot mounting heights, and Lexington Colonial luminaries with 100-watt, high-pressure, sodium vapor lamps.

Section 3. The total estimated cost of maintaining said improvements, supplying electrical energy, and administration thereof for the eight (8) additional lights is \$4,291.00 and the estimated costs for the enlarged district for the first year is \$43,561.00, with the estimated cost being \$0.01859 per square foot of property owned, said amount to be paid by the property owners.

Section 4. The Helena City Commission shall hold a public hearing of this proposed amendment of Resolution No. 19818, in the City Commission Chambers, 316 North Park Avenue, Helena, Montana, at 6:00 p.m. on the 26th day of February, 2018. At such time, all protests that may be made against the proposed amendment of Resolution No. 19818 for Special Improvement District No. 222 shall

RESOLUTIONS OF THE CITY OF HELENA, MONTANA

Resol. 20427

be heard.

Section 7. The Clerk of the City Commission is hereby directed to give notice of the passage of this resolution of intention by publishing the notice of passage pursuant to § 7-1-4127, MCA. Further, a copy of said notice must be mailed to each person, firm or corporation having property within the special improvement lighting district.

PASSED AND EFFECTIVE BY THE COMMISSION OF THE CITY OF HELENA, MONTANA, THIS 22nd DAY OF JANUARY, 2018.

/S/ WILMOT COLLINS
MAYOR

ATTEST:

/S/ DEBBIE HAVENS
CLERK OF THE COMMISSION

Exhibit A

Special Improvement Lighting District (SILD) No. 222 - Amendment

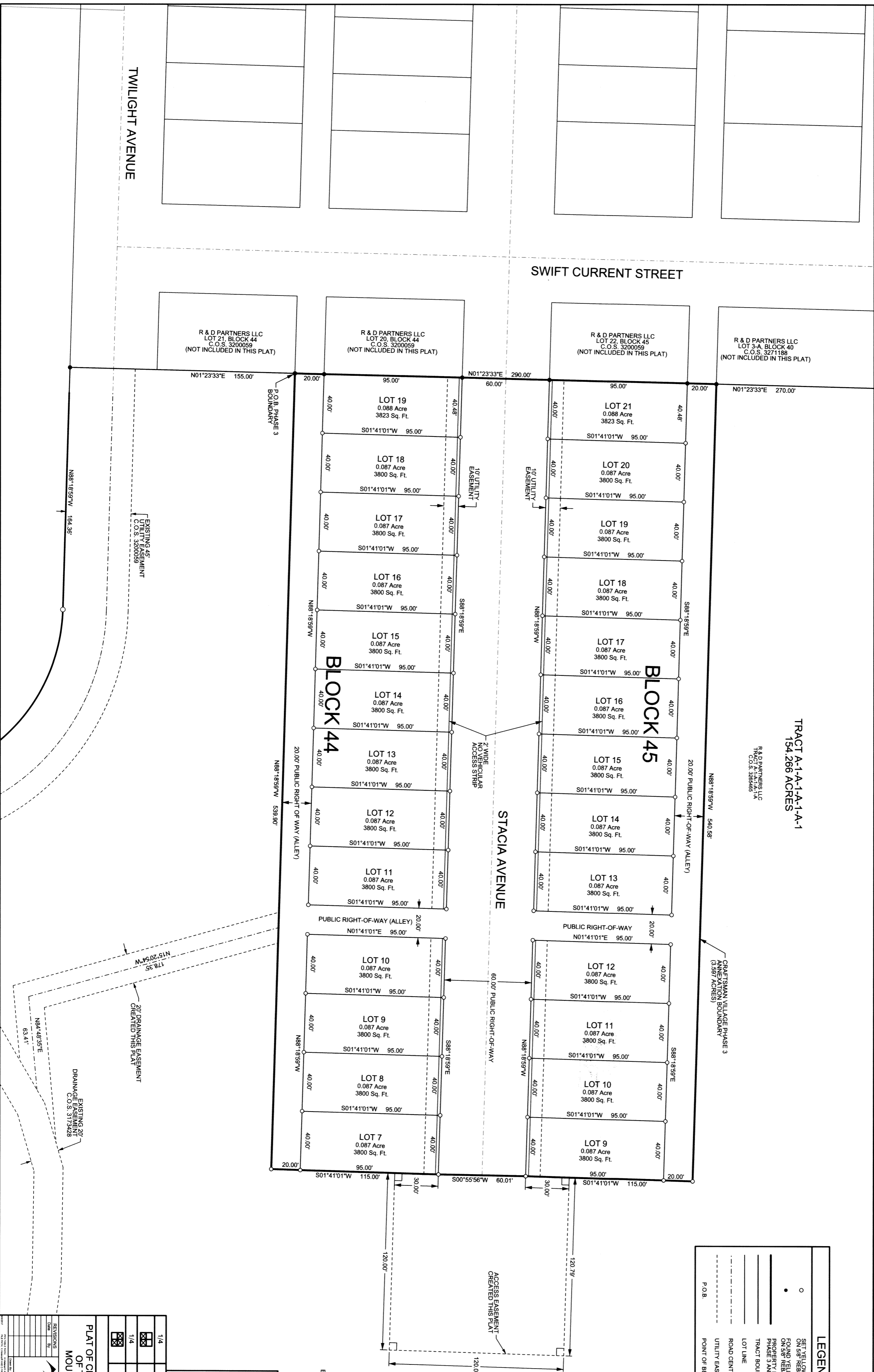
This SILD amendment encompasses the original blocks and lots listed below as shown on the official plat on file in the office of the Lewis and Clark County Clerk and Recorder for Craftsman Village Phase III of Crossroads at Mountain View Meadows Subdivision, as approved by the City Commission September 25, 2017.

Tract A-1-A-1-A-1-A-1

Block 44	Lot 7
Block 44	Lot 8
Block 44	Lot 9
Block 44	Lot 10
Block 44	Lot 11
Block 44	Lot 12
Block 44	Lot 13
Block 44	Lot 14
Block 44	Lot 15
Block 44	Lot 16
Block 44	Lot 17
Block 44	Lot 18
Block 44	Lot 19
Block 45	Lot 9
Block 45	Lot 10
Block 45	Lot 11
Block 45	Lot 12
Block 45	Lot 13
Block 45	Lot 14
Block 45	Lot 15
Block 45	Lot 16
Block 45	Lot 17
Block 45	Lot 18
Block 45	Lot 19
Block 45	Lot 20
Block 45	Lot 21

Exhibit A cont - Final Plat

PLAT OF CRAFTSMAN VILLAGE PHASE 3 OF THE
 CROSSROADS AT MOUNTAIN VIEW MEADOWS SUBDIVISION
 A PORTION OF TRACT A-1-A-1-A-1-A OF CERTIFICATE OF SURVEY NO. 3265465
 LOCATED IN THE E. 1/2 AND THE N.W. 1/4 OF SECTION 35 AND THE S. 1/2 OF SECTION 26,
 TOWNSHIP 10 NORTH, RANGE 3 WEST, P.M.M.
 LEWIS AND CLARK COUNTY, MONTANA



TRACT A-1-A-1-A-1-A-1
 154.266 ACRES
 R & D PARTNERS LLC
 C.O.S. 3265465

LEGEND	
○	SET YELLOW PLASTIC CAP (ZISKA 1898LS)
●	ON SITE REBAR
—	FOUND YELLOW PLASTIC CAP (ZISKA 1898LS)
—	ON SITE REBAR UNLESS OTHERWISE NOTED
—	PROPERTY BOUNDARY (CRAFTSMAN VILLAGE PHASE 3 ANNEXATION BOUNDARY)
—	TRACT BOUNDARY
—	LOT LINE
—	ROAD CENTERLINE
—	UTILITY EASEMENT
—	POINT OF BEGINNING
—	P.O.B.

3312862 SUB 10/12/2017 10:28:01 AM Page 3 of 3 Fees: \$233.00

SCALE: 1" = 30'

BASIS OF BEARINGS
 EAST LINE OF NE 1/4 OF SEC 35 AS SHOWN
 ON C.O.S. 317622

SHEET 3 OF 3

CERTIFICATE OF SURVEYOR
 JAKE K. ZISKA, P.L.S.
 10/3/2017

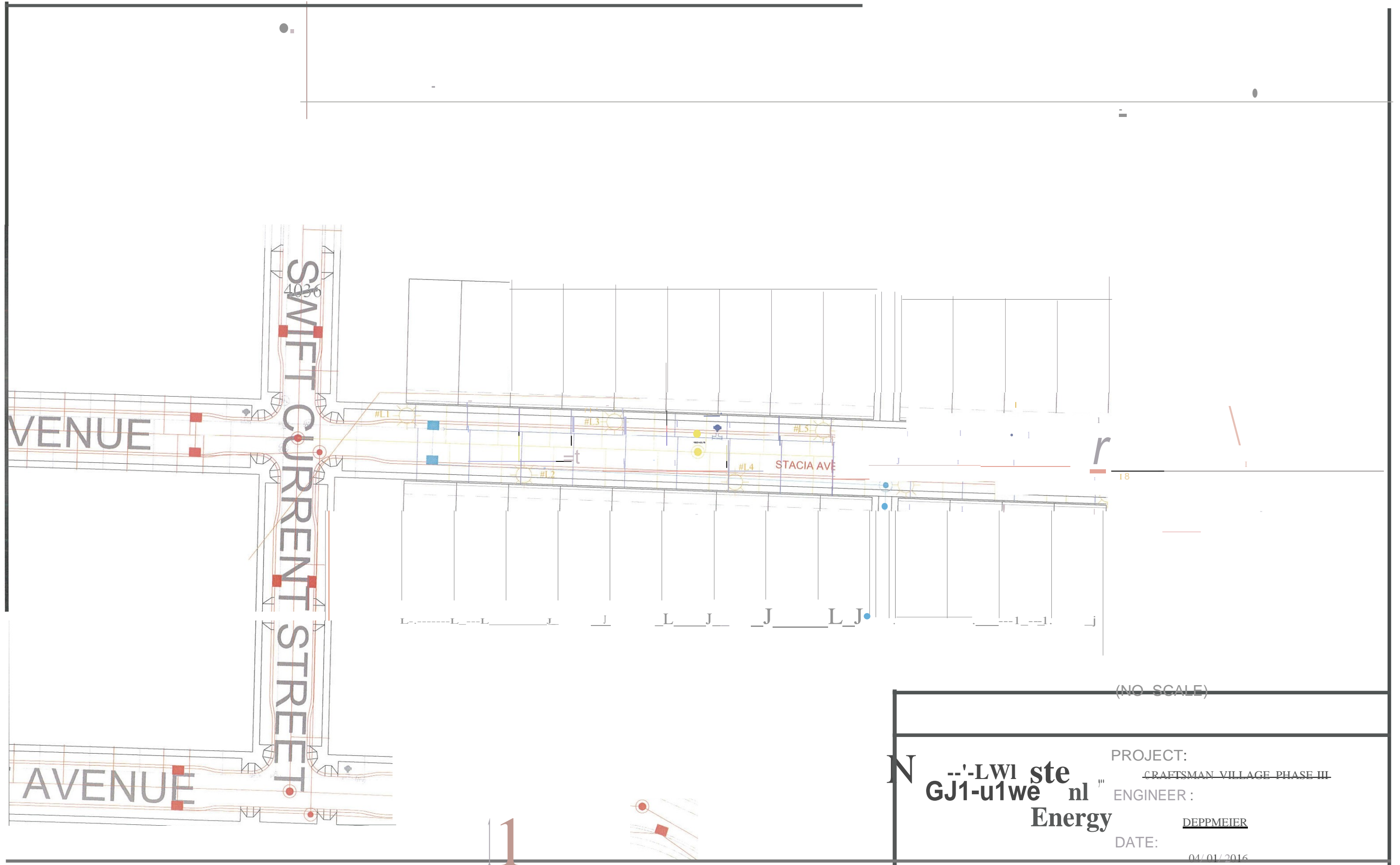
REV.	DATE	DESCRIPTION	
1/4	SEC.	TWP.	RGE.
26	10N	3W	
1/4	SEC.	TWP.	RGE.
35	10N	3W	

PLAT OF CRAFTSMAN VILLAGE PHASE 3
 OF THE CROSSROADS AT
 MOUNTAIN VIEW MEADOWS

R & D PARTNERS

WMC ENGINEERING
 1275 MARLE STREET, SUITE F
 HELENA, MT 59601
 (406) 443-5882

Exhibit A cont - Lighting Map



(NO SCALE)

N	PROJECT:	CRAFTSMAN VILLAGE PHASE III
	ENGINEER:	DEPPMEIER
	DATE:	04/01/2016
	Energy	