

RESOLUTIONS OF THE CITY OF HELENA, MONTANA

RESOLUTION NO. 20341

A RESOLUTION ANNEXING A PORTION OF THE UPLANDS PHASE 1 OF THE CROSSROADS AT MOUNTAIN VIEW MEADOWS SUBDIVISION IN LEWIS AND CLARK COUNTY INTO THE CITY OF HELENA, MONTANA

WHEREAS, R and D Partners, LLC, (now known as Mountain View Meadows, LLC), the legal owner of an approximately 4.236 acre portion of Tract C-2-A-1-A-1-A-1-A-1 as shown on Certificate of Survey No. 3260291, more specifically described as Lots 1-3 in Block 9, Lots 4-8 in Block 12, and Lots 4-9 in Block 22, including the internal dedicated public rights-of-way, Eloise Cobell Street and Uplands Avenue, being a portion of the Uplands Phase 1 of the Crossroads at Mountain View Meadows Subdivision, which property is currently located adjacent to the existing city limits and generally located south of Alice Street and Jeannette Rankin Drive, in Lewis and Clark County Montana, has requested that the City of Helena annex said property;

WHEREAS, the City of Helena desires to annex said property and the internal rights-of-way under the provisions of Montana law;

WHEREAS, the City Commission established conditions for annexation by Resolution No. 19911 on May 7, 2012 and as amended by Resolution No. 20341 on May 22, 2017; and

WHEREAS, the conditions of annexation associated with this portion of the Uplands Phase 1 of the Crossroads at Mountain View Meadows Subdivision have been met.

RESOLUTIONS OF THE CITY OF HELENA, MONTANA

Resol. No. 20341

NOW, THEREFORE, BE IT RESOLVED BY THE COMMISSION OF THE CITY OF HELENA, MONTANA, AS FOLLOWS:

Section 1. The Helena City Commission hereby annexes an approximate 4.236-acre portion of Tract C-2-A-1-A-1-A-1-A-1 as shown on Certificate of Survey No. 3260291, more specifically described as Lots 1-3 in Block 9, Lots 4-8 in Block 12, and Lots 4-9 in Block 22, including the internal dedicated public rights-of-way, Eloise Cobell Street and Uplands Avenue, being a portion of the Uplands Phase 1 of the Crossroads at Mountain View Meadows Subdivision, which property is currently located adjacent to the existing city limits and generally located south of Alice Street and Jeannette Rankin Drive, in Lewis and Clark County Montana, as shown on Exhibit "A" attached hereto.

Section 2. The boundaries of the City of Helena are hereby extended to include the above-described property.

Section 3. The Clerk of the Commission shall certify, under seal of the City of Helena, the Resolution which shall be filed with the Clerk and Recorder of Lewis and Clark County, and thereafter said annexed property shall be a part of the City of Helena and the City of Helena shall have the power to pass all necessary ordinances pertaining thereto.

RESOLUTIONS OF THE CITY OF HELENA, MONTANA

Resol. No. 20341

PASSED AND EFFECTIVE BY THE COMMISSION OF THE CITY OF HELENA,
MONTANA, THIS 22nd DAY OF MAY, 2017.

/S/ JAMES E. SMITH

MAYOR

ATTEST:

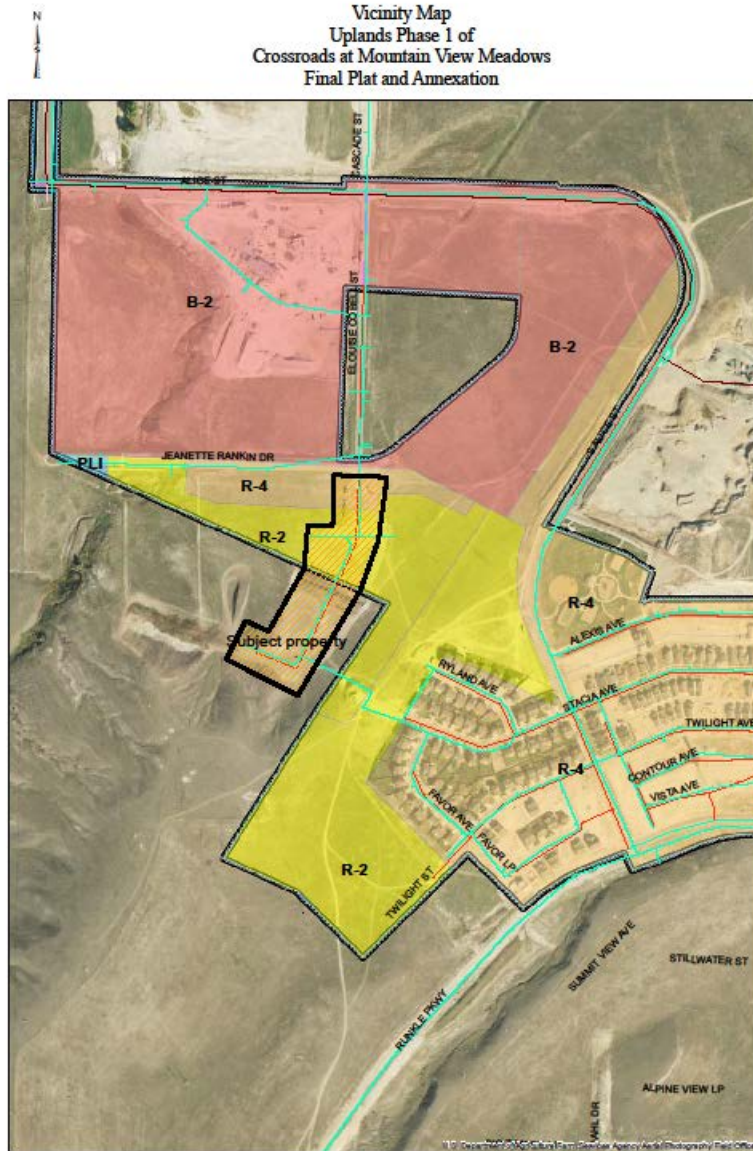
/S/ DEBBIE HAVENS

CLERK OF THE COMMISSION

RESOLUTIONS OF THE CITY OF HELENA, MONTANA

Resol. No. 20341

EXHIBIT "A"



All boundaries are approximations

Page 49 of 73