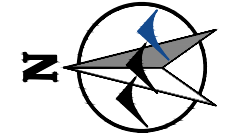
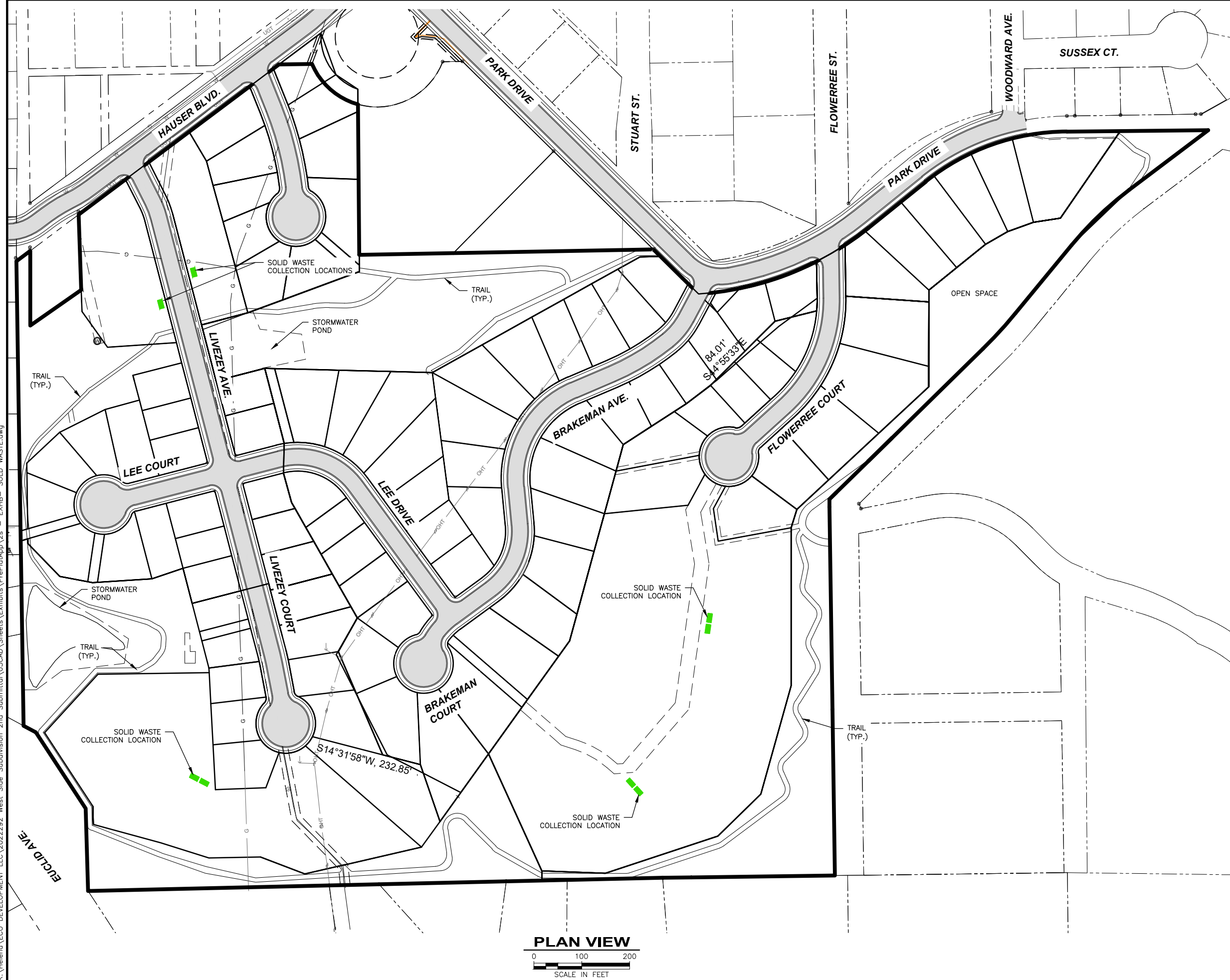


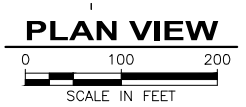


K:\Helena\ECO DEVELOPMENT LLC\2022292 West Side Subdivision 2nd Submittal\05CAD\Sheets\Exhibits\PrePlatApp\2s - EXHB - SOLD WASTE.dwg




 MULTI-DWELLING SOLID WASTE COLLECTION LOCATIONS  
 MULTI-DWELLING LOT BOUNDARY



NO.	REVISION DESCRIPTION	BY	DATE

PROJECT: 2022-292  
 DESIGNED: JMF  
 DRAWN: DCT  
 CHECKED: DDP  
 APPROVED: JMF  
 DATE: AUGUST 17, 2022



**WWC**  
 ENGINEERING  
 1275 MAPLE STREET, SUITE F  
 HELENA, MT 59601  
 (406) 443-3962

**ECO DEVELOPMENT, LLC**  
**WEST SIDE WOODS MAJOR SUBDIVISION**  
 MULTI-DWELLING LOT SOLD WASTE COLLECTION LOCATIONS